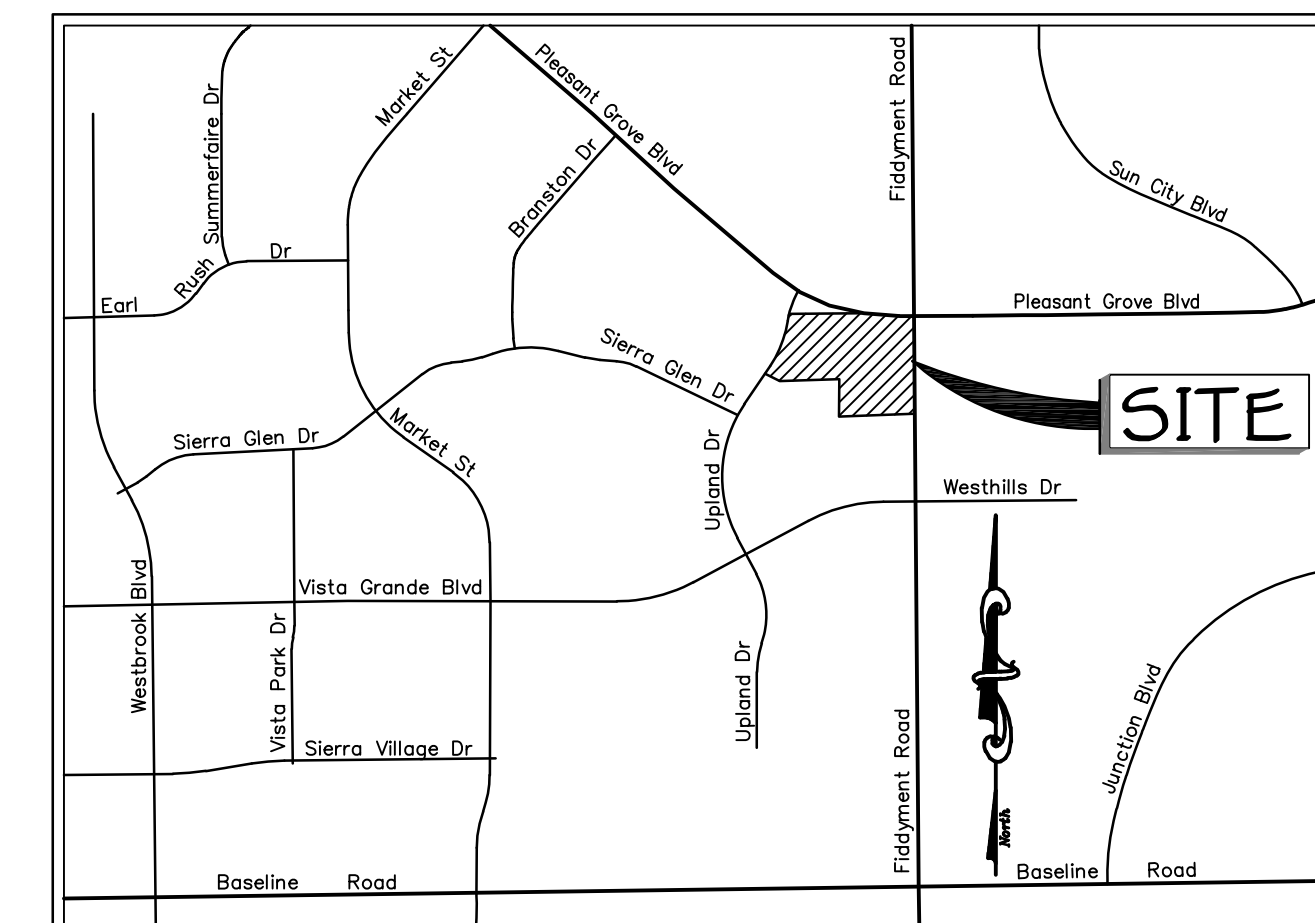
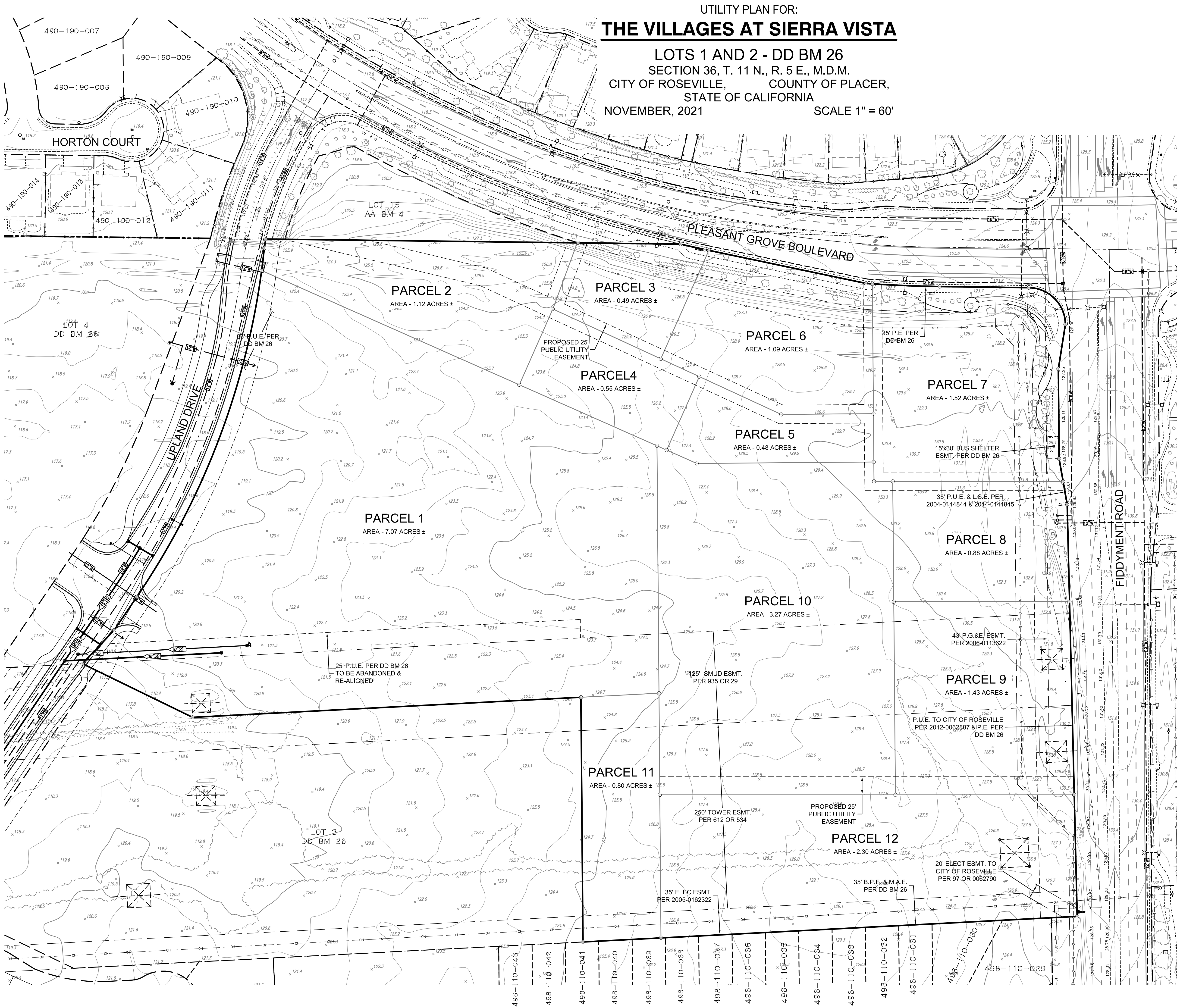


UTILITY PLAN FOR:
THE VILLAGES AT SIERRA VISTA

LOTS 1 AND 2 - DD BM 26
SECTION 36, T. 11 N., R. 5 E., M.D.M.
CITY OF ROSEVILLE, COUNTY OF PLACER,
STATE OF CALIFORNIA
NOVEMBER, 2021 SCALE 1" = 60'



VICINITY MAP

Not to Scale

Owner:
Mourier Investments, LLC,
1430 Blue Oaks Boulevard, Ste. 190
Roseville, CA 95678
PH. (916) 969-2842

Engineer:
Baker Williams Engineering Group
6020 Rutland Drive, Suite #19
Carmichael, CA 95608
Ph. (916) 331-4336
office@bwengineers.com

General Plan Designation
LOT 1 - HDR - High Density Residential
LOTS 2 THRU 12 - CC - Community Commercial

Zoning:
LOT 1 - R3
LOTS 2 THRU 12 - CC

Existing Use:
Vacant

Proposed Use:
Vacant

Assessor's Parcel Nos.
498-010-023
498-010-024

